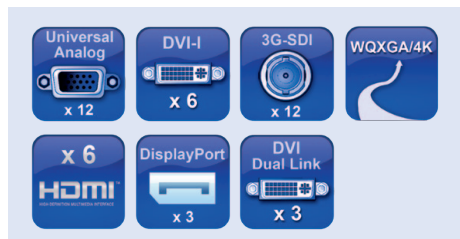


○ Ascender 32 - Ref. ASC3204

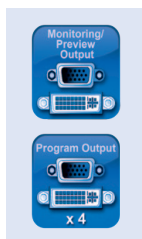
Powerful multi-screen Seamless Switcher based on **Analog Way's** new LiveCore™ platform, offering state-of-the-art processing, Soft Edge and 4K capabilities for top-notch presentations.



INPUTS



OUTPUTS

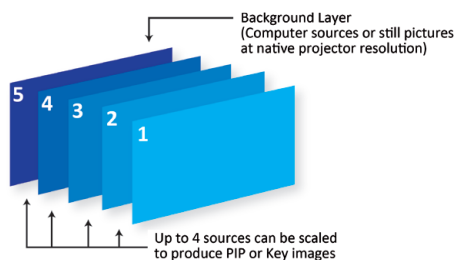


FEATURES



Ascender 32 at a glance

- ▶ New LiveCore™ platform
- ▶ 12 seamless inputs and 42 input plugs
- ▶ Independent Preview/Mosaic/Monitoring output
- ▶ Full live Preview of all sources (Preview/Mosaic/Monitoring)
- ▶ 4 true-seamless scaled layers + 1 native background layer per output
- ▶ Outstanding visual effects
- ▶ Collaborative architecture
- ▶ Ruggedized and heavy-duty design
- ▶ User-friendly and intuitive Graphic Interface
- ▶ Remote Services
- ▶ Additive Modularity



Up to 4 independent true-seamless scaled layers are available per screen, offering the capability to control each layer individually in time and transition.

To Control Ascender 32

- ▶ Web-based Remote Control Software (Web RCS)
- ▶ VCR300: Vertige

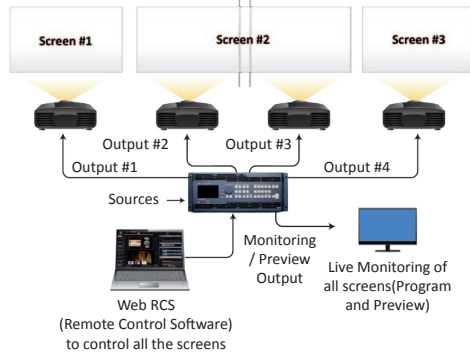
Key Features

- ▶ **12 seamless inputs and 42 input plugs**
 - 6 x HDMI
 - 9 x DVI-I (3 DVI Dual Link included)
 - 3 x DisplayPort (4-Lanes)
 - 12 x 3G/HD/SD-SDI
 - 12 x Universal Analog (6x HD15 & 6xDVI-A)
- ▶ **4 outputs with 5 output plugs**
 - Universal Analog (HD15 & DVI-A)
 - DVI-I (DVI Dual Link available on output #1 and #3)
 - 3G/HD/SD-SDI
 - Video Optical SFP module cage
- ▶ **Features & Effects**
 - Up to 4 true-seamless scaled layers per screen
 - Independent Native Background
 - 50 Frames + 50 Logos memory bank
 - Frames and Logos: fully resizable
 - True A/B mix
 - Output capability up to 2560x1600 and 4K
 - Customizable 4-display layouts: Full Preview, Live Mosaic, Monitoring and Recording
 - Display configurations: Mixer, Hybrid, Hard Edge & Soft Edge
 - Additive modularity: combine 2 Ascender 32 to share/add inputs & outputs up to 24x8
 - Layer border: Edge/Smooth/Shadow/Smooth Edge (Edge: color/width/height)
 - New tool box for layers: Transitions, Effects, Speed, Timing, Faders, Strobe, Mirror,...
 - Numerous effects: Cut, Dissolve, Slide, Wipe, Stretch, Circle, Depth, Flip, Flying Curve, Background Cut, Transparency, Luma/Chroma Key, DSK
 - New Web-based Remote Control Software for multiple users: Web RCS
 - Remote Tools
 - Remote Services

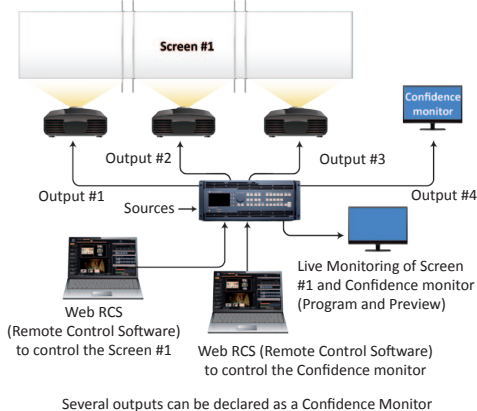


ANALOG WAY®
Pioneer in Analog. Leader in Digital

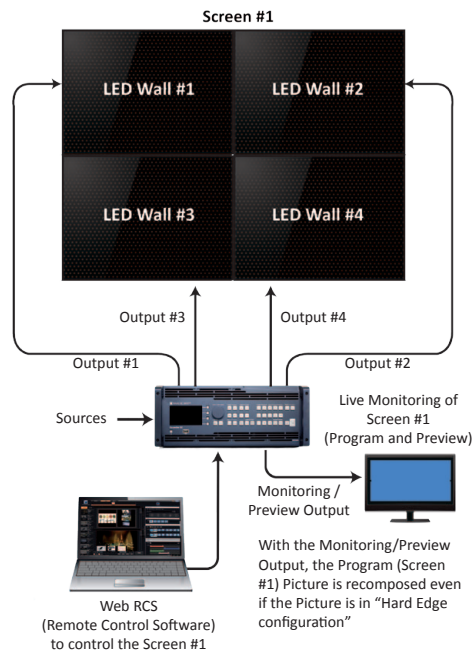
► Multi-screen configuration



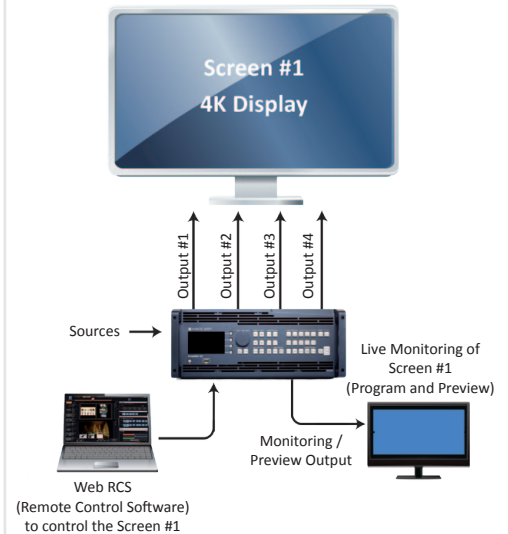
► Soft Edge config. with one output used as Confidence monitor



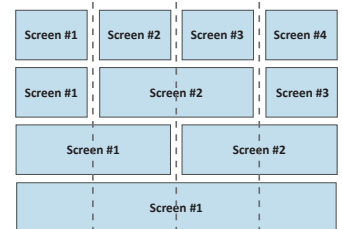
► Hard Edge configuration



► 4K Display



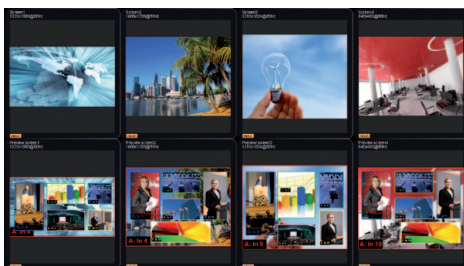
► Display configurations with 4 outputs



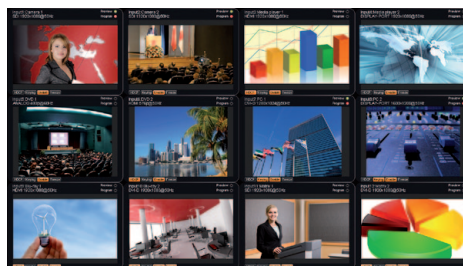
In addition to its four main outputs, **Ascender 32** features an independent Dual-Link output for monitoring purposes.

This output offers versatile and customizable display options, ensuring effective monitoring and flawless show control. All images are live and can be labeled through the Web Remote Control Software. Additional information on each source is also available directly on the live video windows.

Full Preview



Live Mosaic



Dimensions:

- D 21.41" x W 17.51" x H 6.97"
- D 544 mm x W 444.8 mm x H 177 mm

Weight:

- 19 Kgs
- 41.89 lbs

Power Supply:

100-240 VAC ; 4.8A ; 50/60Hz ; 285 W

Supplied with:

- 1 x Power Supply Cord
- 1 x Web-based Remote Control Software (Web RCS)
- 1 x User Manual*
- 1 x Quick Start Guide

Warranty:

3-year warranty on parts and labor back to factory.

Web RCS



- The Web RCS offers a user-friendly graphic interface consisting of 3 independent sections: Setup, Edit and Live. A Preconfig. mode indicates how to easily configure the device step by step.
- With dynamic snapshots of the connected sources available in the interface, the intuitive dashboard allows operators to fully prepare their shows and control them live during their events.
- An innovative Sequences mode allows easy organization of presets through drag and drop operation.



* All User Manuals and Quick Start Guides are also available on www.analogway.com

ⓘ Specifications subject to change without prior notice

All technical specifications are available on our website